

RED CARPET STUDIOS LTD • FALL 2019



Fashion Accessories and Apparel



Faux Fur Ponchos

ONE SIZE FITS MOST • 100% POLYESTER



42" X 35"
Animal Print
65354-2-0531



29.5" X 29.5"
Vanilla
65355-2-0531



29.5" X 29.5"
Plaid Grey
65361-2-0531



29.5" X 29.5"
Plaid Butterscotch
65362-2-0531



6-PC ASSORTMENT
65350-6-0018



Faux Fur and Pearl Ponchos

ONE SIZE FITS MOST • 100% POLYESTER



42" X 35"
Grey Floral
65351-2-0531



42" X 35"
Black
65353-2-0531



42" X 35"
White Diamond
65352-2-0531



Bouclé Plaid Ponchos

ONE SIZE FITS MOST • 50% ACRYLIC/50% POLYESTER

8-PC ASSORTMENT
65260-8-00611



51" X 25"
Grey/Black
65261-2-0541



51" X 25"
Navy
65262-2-0541



51" X 25"
Russet/Black
65263-2-0541



51" X 25"
Grey/Camel
65264-2-0541



6-PC ASSORTMENT
65270-6-0057



Sweater Ponchos

ONE SIZE FITS MOST • 100% ACRYLIC



25" X 25"
Denim Blue
65271-2-0521



25" X 25"
Garnet
65272-2-0521



25" X 25"
Fuschia
65273-2-0521



Striped Ponchos

ONE SIZE FITS MOST • 100% ACRYLIC



25" X 25"
Black
65291-2-0521



25" X 25"
Burgundy
65292-2-0521



Fringed Shrugs

35.43" X 39.37" • 100% ACRYLIC • ONE SIZE FITS MOST



Berry

65131-2-0001



8 09048 65131 7



Lurex Border Shawls

36" X 69" • 100% VISCOSE

9-PC ASSORTMENT

62550-9-0054



8 09048 62550 9



Jet Black

62551-3-0050



8 09048 62551 6



Mulberry

62552-3-0050



8 09048 62552 3



Copper

62553-3-0050



8 09048 62553 0

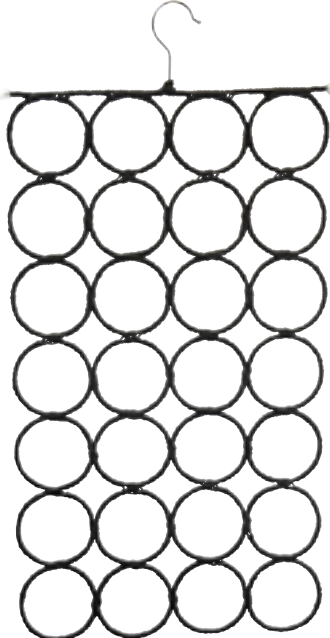


Scarf Organizers

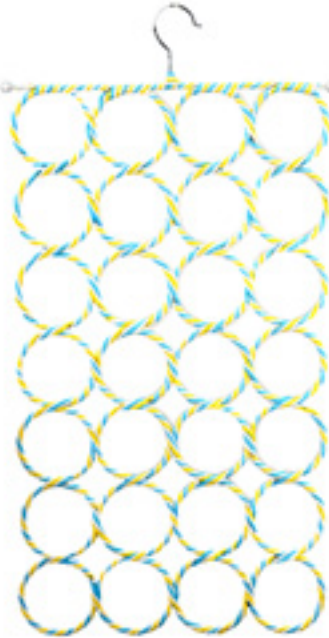
15"W X 26"L • 3.5" HANGER • 28 CIRCLES TO HANG YOUR SCARVES



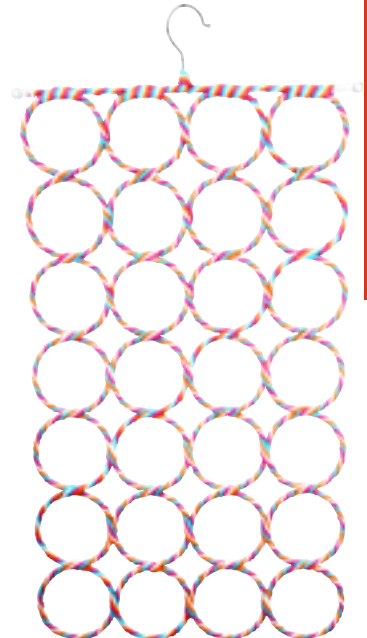
White Scarf Organizer
99946-6-0030



Black Scarf Organizer
99947-6-0030



Yellow/Blue/White Scarf Organizer
99948-6-0030



Pink/Blue/Yellow/White Scarf Organizer
99949-6-0030



Body Form Display

12.5" W X 24"H



****SCARF NOT INCLUDED WITH THIS DISPLAY**

Black Body Form
09960-1-0032



Stars and Stripes

39" X 70" • 100% POLYESTER



Stars and Stripes
62499-3-0040



Scarf Blankets

57" X 57" • 100% ACRYLIC



Teal Tartan Plaid
64284-3-0560



Houndstooth Button Front Dresses/Tunics

100% POLY CREPE • REMOVABLE TIE BELT • MADE IN INDIA



Cranberry/Navy
66554-2-0001 - S/M

8 09048 66554 3
66555-2-0001 - L/XL

8 09048 66555 0



Pajama Night Shirts

100% COTTON • COTTON PIPING



Pink Chevron
66211-2-0051 - S/M

8 09048 66211 5
66212-2-0051 - L/XL

8 09048 66212 2
66213-2-0051 - 1X
8 09048 66213 9

Blue Chevron
66214-2-0051 - S/M

8 09048 66214 6
66215-2-0051 - L/XL

8 09048 66215 3
66216-2-0051 - 1X
8 09048 66216 0

6-PC ASSORTMENT
66210-6-0009

8 09048 66210 8

Comes packaged in matching pattern gift bag!



20-PC ASSORTMENT
68270-20-0002

\$10.00 PER HAT
WHEN BUYING ASSORTMENT



LED Dancing Ears Animal Hats

ONE SIZE FITS MOST • 100% POLYESTER
HAT 12"X 8" • LENGTH 29.5" • 3 LR44 BATTERIES (PER SIDE) INCLUDED

HATS



Unicorn
68272-4-0011



Bunny
68275-4-0011



Elephant
68277-4-0011



Puppy Dog
68276-4-0011



Pig
68278-4-0011



*Ears move Up
and Down!*

*Lights
Up!*

*Press Paws for Ear
Motion and Lights*

Animal Hats

ONE SIZE FITS MOST • 100% POLYESTER
HAT 7.88" X 5.9" • LENGTH 37"

32-PC ASSORTMENT
68250-32-00272



Elephant
68251-4-0580



Dog
68253-4-0580



Cow
68256-4-0580





White Bunny
68257-4-0580



Pink Bunny
68258-4-0580



Penguin
68261-4-0580



Snow Leopard
68263-4-0580



Tiger
68265-4-0580



Knitted Floral Headband

100% POLYESTER



Maroon/White
61003-6-0530



Red/Gray
61006-6-0530



Red/Black
61008-6-0530



Blue/Orange
61010-6-0530



Black/Gold
61002-6-0530



Blue/White
61004-6-0530



Orange/Black
61007-6-0530



Green/Gold
61009-6-0530



Maroon/Gold
61012-6-0530





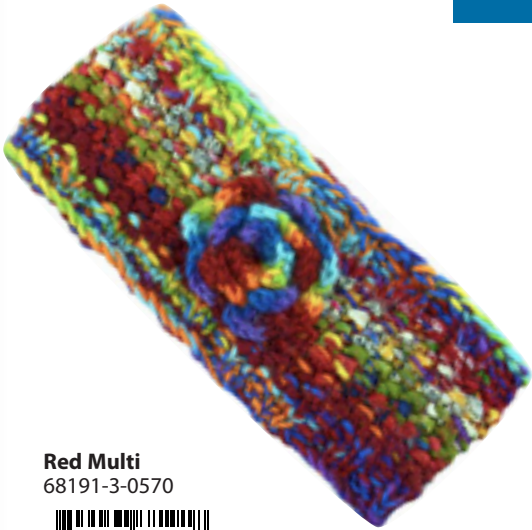
9-PC ASSORTMENT
68190-9-0576

 8 09048 98190 2

Wool Knit Flower Headband

ONE SIZE FITS MOST • 100% WOOL • FLEECE LINED
 HAND WOVEN NEPAL PRODUCT
 COLORS MAY VARY SLIGHTLY

HEADBANDS



Red Multi
 68191-3-0570


 8 09048 68191 8



Purple Multi
 68192-3-0570


 8 09048 68192 5

Faux Fur Texting Gloves

ONE SIZE FITS MOST • 90% POLYESTER/10% FAUX FUR

18-PC ASSORTMENT
3 OF EACH COLOR
61120-18-0018
8 09048 61120 5



Black
61121-6-0540
8 09048 61121 2

Caramel
61122-6-0540
8 09048 61122 9

Gray
61123-6-0540
8 09048 61123 6



Cranberry
61124-6-0540
8 09048 61124 3

Navy
61125-6-0540
8 09048 61125 0

Chocolate
61126-6-0540
8 09048 61126 7



Rhinestone Arm Warmers

ONE SIZE FITS MOST • 75% COTTON • 25% SPANDEX
RUFFLED EDGES • RHINESTONE ACCENTS



Purple
61192-6-0520
8 09048 61192 2



18-PC ASSORTMENT
99830-18-0099



Faux Fur Animal Print Texting Gloves

ONE SIZE FITS MOST • 90% POLYESTER /10% FAUX FUR/METAL

GLOVES



Leopard - Natural
61134-6-0550



Cheetah - Olive
61135-6-0550



Cheetah - Oatmeal
61136-6-0550



18-PC ASSORTMENT
61130-18-0099



Faux Fur w/ Stones Texting Gloves

ONE SIZE FITS MOST • 90% POLYESTER /10% FAUX FUR/METAL



**Faux Fur Gloves w/
Stones - Maroon**
61127-6-0550



**Faux Fur Gloves w/
Stones - Gray**
61128-6-0550



**Faux Fur Gloves w/
Stones - Black**
61129-6-0550



Wool Felt Coin Purses

WOOL FELT • MADE IN NEPAL

24-PC ASSORTMENT

3 OF EACH DESIGN

60550-24-0069



Sheep

60552-6-0040

5.5"W X 5.5"H



Owl

5.75"W X 4.5"H

60553-6-0040



FIT YOUR
SPARE
CHANGE,
CHAPSTICK
AND MORE!



Fish

5.75"W X 4.5"H

60554-6-0040



Unicorn

5.75"W X 4.5"H

60555-6-0040





COIN PURSES



Cat
60513-6-0040



8 09048 60513 6



Owl
60514-6-0040



8 09048 60514 3



Hippo
60516-6-0040



8 09048 60516 7



Penguin
60515-6-0040



8 09048 60515 0

Pig-E Pals Toddler Socks

AGES 2-5 TODDLER • 3 DESIGNS-SANTA, SNOWMAN, REINDEER
GIFT BOXED • \$4.00 EACH • 95% POLYESTER/2% SPANDEX

12-PC ASSORTMENT
89030-1-0084



Gift Boxed

Pig-E Pals Cozy Kids Socks

AGES 4-10 • ONE SIZE FITS MOST • 98% POLYESTER/2% SPANDEX

24-PC ASSORTMENT
67320-24-0009

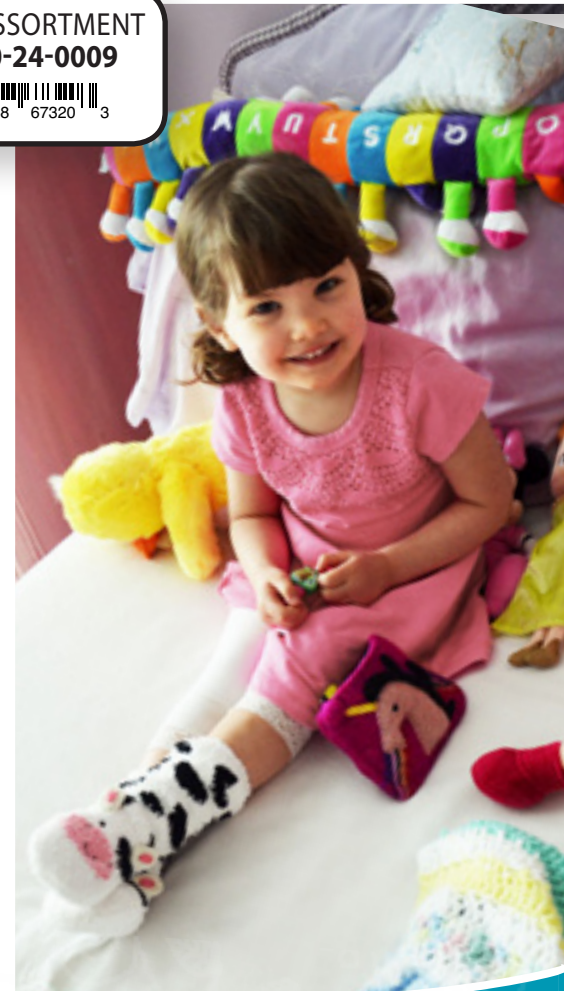


Puppy
67321-6-5730
8 09048 67321 0

Cat
67323-6-5730
8 09048 67323 4

Cow
67322-6-5730
8 09048 67322 7

Bear
67324-6-5730
8 09048 67324 1



30-PC ASSORTMENT
67310-30-0528



8 09048 67310 4

Pig-E Pals Owls Kids Knit Socks

AGES 4-7 • ONE SIZE FITS MOST • 70% COTTON/25% POLYESTER/5% SPANDEX



Yellow/Brown
67311-6-5720



8 09048 67311 1



Red/Navy
67313-6-5720



8 09048 67313 5



Gray/Black
67315-6-5720



8 09048 67315 9

KID'S SOCKS



Pink/White
67312-6-5720



8 09048 67312 8



Blue/Green
67314-6-5720



8 09048 67314 2

Heathered Dobby Socks

5.99" X 6.89"; 2.75" OPENING • ONE SIZE FITS MOST • MINI CREW SOCKS • 95% ACRYLIC/5% SPANDEX

24-PC ASSORTMENT
60140-24-0027



Green
60141-6-0030



Pink
60143-6-0030



Yellow
60142-6-0030



Burgundy
60144-6-0030



Sweater Pattern Socks

5.99" X 6.89"; 2.75" OPENING • ONE SIZE FITS MOST • MINI CREW SOCKS • 95% ACRYLIC/5% SPANDEX

18-PC ASSORTMENT
60190-18-0045



Tan
60191-6-0030



Plum
60193-6-0030



Burgundy
60194-6-0030



18-PC ASSORTMENT
61420-18-0045



Diamond Striped Socks

ONE SIZE FITS MOST • QUARTER LENGTH • 95% POLYESTER/5% SPANDEX

SOCKS



Diamond Striped Sock - Mustard
61421-6-0030



Diamond Striped Sock - Merlot
61422-6-0030



Diamond Striped Sock - Teal
61423-6-0030



30-PC ASSORTMENT
60330-30-00021



Multi Pattern Socks

9.45" X 11.02" • ONE SIZE FITS MOST • CREW LENGTH • 98% POLYESTER/2% SPANDEX



Plum Heel
60331-6-0040



Black Heel
60332-6-0040



Navy Heel
60333-6-0040



Orange Heel
60334-6-0040



Purple Heel
60335-6-0040



Fun Socks Pattern Socks

ONE SIZE FITS MOST • QUARTER LENGTH • 95% POLYESTER/ 5% SPANDEX

SEE OUR SOCK PRODUCT ASSORTMENT ON PAGE 68!

18-PC ASSORTMENT

61430-18-0045



Yellow
61431-6-0030



Purple
61433-6-0030



Pink
61432-6-0030



Pattern close up



Holiday Slippers

ONE SIZE FITS MOST • OUTER SHELL: 95% ACRYLIC/5% KNITTED • LINING: 100% POLYESTER • NON SLIP GRIP BOTTOMS



Holiday Slippers - Tree
89016-3-0060



Holiday Slippers - Snowflake
89017-3-0060



No slip grip bottoms!

24-PC ASSORTMENT
60240-24-00621



Bouclè Slippers

ONE SIZE FITS MOST • 100% POLYESTER/SEQUINS/LUREX • MACHINE WASHABLE

SLIPPERS



Taupe
60241-6-5250



No slip grip bottoms!

Red
60243-6-5250



Pink
60242-6-5250



Black
60244-6-5250



24-PC ASSORTMENT
60180-24-00411



Nubbie Fuzzy Footies

ONE SIZE FITS MOST • 98% POLYESTER/2% SPANDEX • MACHINE WASHABLE



Light Blue
60181-6-5740



No slip grip bottoms!

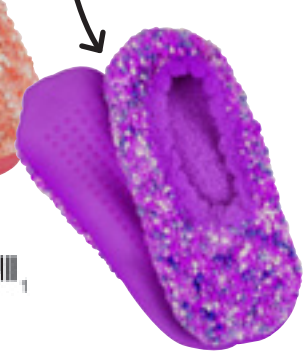
Peach
60183-6-5740



Pink
60182-6-5740



Lavender
60184-6-5740



Fuzzy Footies

ONE SIZE FITS MOST • 97% POLYESTER/3% SPANDEX



FEATURES

- COMFY & COZY
- SLIP RESISTANT BOTTOMS
- GREAT FOR TRAVEL
- WASHABLE

10 Classic Colors

BLUE/GREEN/PURPLE • RED • PINK • PURPLE • CHOCOLATE • BLACK • PURPLE/RED/VIOLET • BLUE/TEAL/LT BLUE • PINK/WHITE/PEACH • GRAY/BLACK/WHITE • PLEASE SPECIFY IF YOU NEED 09923 OR 09924 DISPLAY (AT NO CHARGE)

60-PC ASSORTMENT
60000-60-00582



10 Multi Colors

• PLEASE SPECIFY IF YOU NEED 09923 OR 09924 DISPLAY (AT NO CHARGE)

60-PC ASSORTMENT
60000-NW-00582



20 Colors

• PLEASE SPECIFY IF YOU NEED 09928 DISPLAY (AT NO CHARGE) OR 09931 DISPLAY IF PURCHASING 240 PCS

120-PC ASSORTMENT
60000-120-00075



Point of Purchase Display

* 09923 DISPLAY INCLUDED

12.5"D X 18.5"T X 18.75"W

09923 DISPLAY INCLUDED WITH 48 PC ASSORTMENT



48-PC ASSORTMENT
60000-PD-00822



SHOWN WITH HEADER CARD.

Fuzzy Footies Countertop Display

18"DIA X 27"T • HOLDS 48 PCS

09924-1-0004



Fuzzy Footies Floor Display

18"DIA X 81"T • HOLDS 120 PCS

09928-1-0005



Fuzzy Footies Grid Display

24"W X 78"T • 50 HOOKS INCLUDED • HOLDS 240 PCS • (SIZE DOES NOT INCLUDE HEADER CARD) HEADER CARD INCLUDED

09931-1-0006

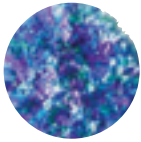




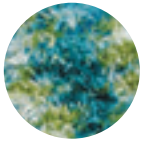
Fuzzy Footies

ONE SIZE FITS MOST • 97% POLYESTER/3% SPANDEX

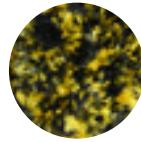
FUZZY FOOTIES



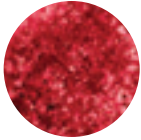
Blue/Green/Purple
60001-6-5740



Lt Blue/Lt Green/White
60023-6-5740



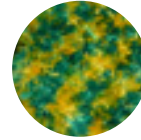
Black/Yellow
60077-6-5740



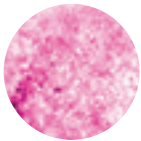
Red
60004-6-5740



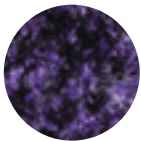
Dk Purple/Pink/Purple
60025-6-5740



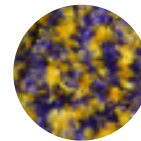
Green/Yellow
60078-6-5740



Pink
60005-6-5740



Purple/Black
60026-6-5740



Purple/Yellow
60079-6-5740

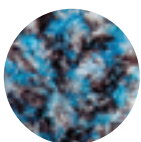


FEATURES

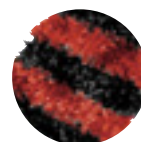
- COMFY & COZY
- SLIP RESISTANT BOTTOMS
- GREAT FOR TRAVEL
- WASHABLE



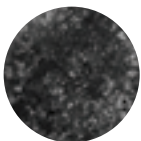
Purple
60006-6-5740



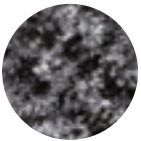
Brown/White/Turquoise
60028-6-5740



Black/Red
60087-6-5740



Black
60008-6-5740



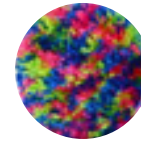
Gray/Black/White
60035-6-5740



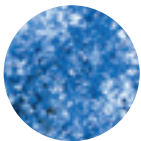
Black/Gold
60088-6-5740



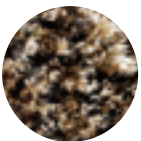
New Colors!



Pink/Bright Green/Blue
60021-6-5740



Blue/Teal/Light Blue
60010-6-5740



Camel/Black
60036-6-5740



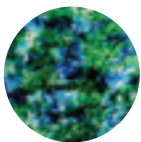
Med Adult Rainbow
60098-6-5740



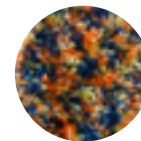
Maroon/Cream/Dark Green
60022-6-5740



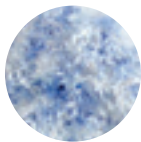
Red/Magenta/Pink
60011-6-5740



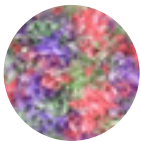
Green/Blue/White
60037-6-5740



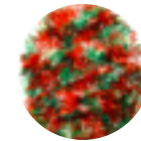
Peach/Cream/Navy
60067-6-5740



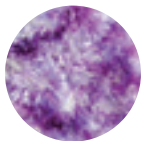
Powder Blue/White
60014-6-5740



Purple/Green/Pink
60064-6-5740



Red/Green/White
60068-6-5740



Lavender/White
60015-6-5740



Teal/Navy/Fuchsia
60070-6-5740



No slip grip bottoms!

Knit Boot Cuffs

9" L • .5" LACE TRIM • ONE SIZE FITS MOST • 100% COTTON
 POINTELLE KNIT • LACE TRIM • BUTTON ACCENTS



Burgundy
60273-4-0040

8 09048 60273 9

Black
60272-4-0040

8 09048 60272 2

Navy
60277-4-0040

8 09048 60277 7



Lace Boot Cuffs

ONE SIZE FITS MOST • 100% POLYESTER



Ivory
60275-4-0030

8 09048 60275 3

Black
60276-4-0030

8 09048 60276 0



24-PC ASSORTMENT
60260-24-00801



Knit Leg Warmers

18" L • .5" LACE TRIM • ONE SIZE FITS MOST • 100% COTTON
PONTELLE KNIT • LACE TRIM • BUTTON ACCENTS

LEG WARMERS



Cream
60261-4-0540
8 09048 60261 6



Chocolate
60262-4-0540
8 09048 60262 3



Navy
60263-4-0540
8 09048 60263 0



Gray
60264-4-0540
8 09048 60264 7



Black
60265-4-0540
8 09048 60265 4



Burgundy
60266-4-0540
8 09048 60266 1

Leggings/Tights

ONE SIZE FITS MOST

- 100% POLYESTER (61193)
- 95% POLYESTER/5% SPANDEX (67151 & 67152)

Rhinestone - Gray Leggings
61193-2-0050



Royal Blue Floral Leggings
67151-2-0060



Navy Floral Leggings
67152-2-0060



ONE SIZE FITS MOST • 95% POLYESTER/5% POLYURETHANE

Purple Lace Footless Tights
62121-2-0060



Blue Lace Footless Tights
62122-2-0060



Black Lace Footless Tights
62123-2-0060



ONE SIZE FITS MOST

- 85% NYLON/10% SPANDEX/5% POLYESTER (61197)
- 90% POLYESTER/10% SPANDEX (61198 & 61199)

Polka Dot Patterned Tights
61197-2-0040



Cheetah Patterned Tights
61198-2-0040



Camo Patterned Tights
61199-2-0040



Create-A-Lace™

PATENT PENDING D 736, 514 S

- NEVER TIE YOUR SHOES AGAIN
- PERSONALIZE WITH STICKERS
- SMILEY FACES, SPORTS THEMED AND LETTER STICKERS ALL INCLUDED
- FULLY ADJUSTABLE TO FIT ALL SIZE SHOES
- IDEAL FOR PEOPLE HAVING DIFFICULTY TYING THEIR SHOES
- ONE SIZE FITS MOST
- AGES 6 AND UP



SCAN TO SEE VIDEO!

CREATE-A-LACE



Rainbow

90001-6-0520



Neon

90002-6-0520



Round Table Display

HOLDS 90 PACKS • SHOE NOT INCLUDED



09964-1-0004



Square Table Display

HOLDS 60 PACKS



09965-1-0004



Neon Jazzy Sport Laces®



Neon Pink
69521-6-0040



Neon Yellow
69522-6-0040



Neon Green
69523-6-0040



Neon Orange
69524-6-0040



Fanwear® #1

Fanwear Jazzy Sport Laces®



Red/White
69551-6-0520



Black/Gold
69552-6-0520



Blue/Gold
69553-6-0520



Purple/Gold
69555-6-0520



Red/Gray
69556-6-0520



Orange/Black
69557-6-0520



Red/Black
69558-6-0520



Green/Gold
69559-6-0520



Blue/Orange
69560-6-0520



Maroon/Gold
69567-6-0520



Maroon/White
69568-6-0520





SCAN TO
CHECK OUT THE
INSTRUCTIONAL
VIDEO



**ORDER
NOW!!**

JAZZY LACES



PATENT PENDING D 736, 514 S

www.jazzysportlaces.com

FEATURES

- NO TIE • WEAR FOR ANY SPORT OR EVERYDAY FASHION • \$4.00 WHOLESALE • MIN 6 PER COLOR
- ADJUSTABLE LACES FITS TODDLERS TO ADULTS • SILICONE LACES • 14 PER PACKAGE

SHOES BECOME SLIP-ON/SLIP-OFF!



Red
69502-6-0040



Orange
69503-6-0040



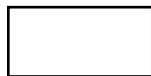
Yellow
69504-6-0040



Green
69505-6-0040



Blue
69506-6-0040



White
69507-6-0040



Black
69508-6-0040



Pink
69509-6-0040



Brown
69510-6-0040



Camo
69511-6-0040



Rainbow
69531-6-0040



Neon Multi
69532-6-0040





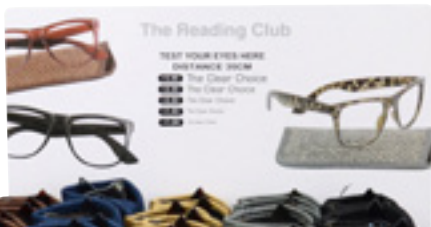
Reading Glasses

PLASTIC FRAMES • EACH DUMP DISPLAY INCLUDES 30 GLASSES WITH CASES • +1, +1.50, +2, +2.50, +3.00 PRESCRIPTIONS • \$3.25 EACH

3-PC ASSORTMENT
49170-3-05292 ***



*** INCLUDES 1 DUMP OF EACH STYLE (49171, 49172, & 49173)



Woven Case

49171-1-0579





Nylon Case

49172-1-0579



Suede Case

49173-1-0579



RFID Hard Case Wallet Assortment

2.95" X 0.78" X 4.33" • PP/PVC • \$2.00 EACH
 PDQ - 8.26" X 7.75" 4.52"

*** INCLUDES COUNTERTOP DISPLAY
 4 OF EACH DESIGN (3 DESIGNS)

RFID Hard Case Wallet
 12-PC ASSORTMENT
 49168-2-0042



Rectangle Baskets With Flower

4" T X 9.5" W X 5.5" D • 100% PAPER BAKET • MULTIPLE COLORS
 4 OF EACH COLOR (5 COLORS)

20-PC ASSORTMENT
 09962-20-0052



*PRODUCT NOT INCLUDED





RCS Gifts Fall Fashion 2019

Price List/Index: This is a great way of quickly finding pricing, minimums, and the page number to find your favorite products. The items are the equivalent of (Item#)-(Minimum)-(Wholesale cost backwards). Therefore, item # 65354 is ordered in minimums of 2, and the wholesale is \$13.50 each.

Just for the Fun of It!

Come See Us at our Permanent Showrooms:

City	Location	Showroom #, Name
Atlanta	AmericasMart Building 2 17th Floor	Suite 1713B, Red Carpet Studios Corporate Showroom
Atlanta	AmericasMart Building 2 17th Floor	Suite 1713A, Bill Curlee
Columbus	Columbus Marketplace	#210, Mark Williams and Associates
Dallas	Dallas Market Center	Dallas Trade Mart 1600, Cathy & Co., Inc.
Denver	Denver Merchandise Mart	1229, United Giftware Sales
Las Vegas	World Market Center	Building C, Suite C-0891, Next Step Reps
Minneapolis	Minneapolis Mart	Green 465, BPA Sales
Seattle	Seattle Mart	#105, DandyLines

Terms & Conditions

New Account Policy

Net 30 days- Submit a completed and signed Red Carpet Studios credit application or send us your own credit reference sheet. Notice: Net Credit Term accounts that pay by credit card will incur an additional 3% fee. Credit subject to approval. Past due accounts are subject to a 1% per month finance charge. Accounts will be assessed collection and/or attorney fees as required to obtain payment.

Credit Card- We accept Visa, MasterCard and American Express (no Discover Card). Required information at time of order includes credit card number, expiration date, cardholder name and signature, security code (CVV code), card billing address and zip code. Credit/debit card payments do not qualify for the prepaid reduced freight. There may be occasions when a card imprint will be necessary. Red Carpet Studios must know if the card to be used is credit or debit.

Prepaid- Prepaid payment must be received 10 days prior to ship date for total amount of the order plus 18% to cover shipping (Ground shipments within the Continental US only). Credit card payments are not considered prepaid. The check or an ACH payment for the full amount must accompany your order. COD not accepted.

Minimums: Opening orders and all reorders require a minimum of \$250.00. Red Carpet Studios reserves the right to increase quantities to meet published minimums. Special Care has been taken in the packaging of these items to protect them from breakage. In order to maintain the integrity of this packaging, all items must be ordered in multiples of the required minimum quantity.

Return Policy: All returns and deductions must have an authorization number, which will be supplied to you by Red Carpet Studios customer service department. In order to receive credit for damages or defective items we must receive notice within 10 days after receipt of goods. Any merchandise returned to Red Carpet Studios without approval is subject to a 15% restocking fee. Absolutely no guaranteed sales. Credit for returns is the sole discretion of Red Carpet Studios, Ltd. Exceptions to the above stated terms must be approved and confirmed in writing by Red Carpet Studios management. Approved claims for credit will apply to future orders.

Backorder Policy: All backorders \$100 or less are subject to cancellation by RCS without notice.

Shipping Terms: Shipments are FOB Loveland, Ohio. FedEx Ground is the RCS preferred freight carrier within Continental United States. RCS will use its best efforts to obtain the lowest shipping rates available.

F.O.B.: Title to your order passes to you as Freight on Board (FOB) at the Red Carpet warehouse dock in Loveland, Ohio. You accept responsibility for the shipment at this time. You are responsible for the freight to ship the order to you and the cost of insurance covering damage during shipment. The event of taking title to the items you have ordered at this time entitles you to inspect the goods, choose insurance coverage and choose the freight carrier and method of payment for the freight carrier. You must include with your placement of the sales order instructions as to how Red Carpet may assist you in the delivery of your order. **Customers are responsible for any inside or residential delivery charges and for any lift gate charges.**

Freight Cap: Currently, RCS offers a freight cap on orders exceeding \$1000.00 of invoiced merchandise at the full wholesale value (no other discounts or promotions apply) on all product INCLUDING OVERSIZE. Freight caps are good on ALL product and good for the 1st shipment only. Any backorders will be shipped regular freight and therefore cancellable by RCS depending on the amount. RCS will strive to ship at a 90% fill rate or better. Customers are responsible for any inside or residential delivery charges and for any lift gate charges. Customers are also responsible for any charges made by freight carriers for multiple delivery attempts, re-delivery or re-routing. Contact your local sales rep or RCS customer service for more details. Freight cap orders must ship to one location. RCS chooses carrier. Valid only throughout the continental United States. RCS may amend or cancel this program at any time. ****All Freight Caps will be calculated on the full wholesale price of the product before any discounts** **Cannot be combined with any other promotions, discounts or freight programs****

Price: \$5.00



Red Carpet Studios, Ltd.
107 Northeast Drive
Loveland, Ohio 45140

Local 1-513-774-1600
Toll Free 1-877-985-0405
Fax 1-513-774-1601
Email mail@rcsgifts.com

PRSR STD
U.S. POSTAGE
PAID
CINCINNATI, OH
PERMIT NO. 6657

**WATCH FOR THE
2020 RCS
GARDEN COLLECTION
COMING IN AUGUST!**



LED Motion Ears Hats
page 9



Animal Hats
page 10-11

www.rcsgifts.com

SHOWROOM

Atlanta Mart • Building 2 • 17th Floor • Suite 1713B